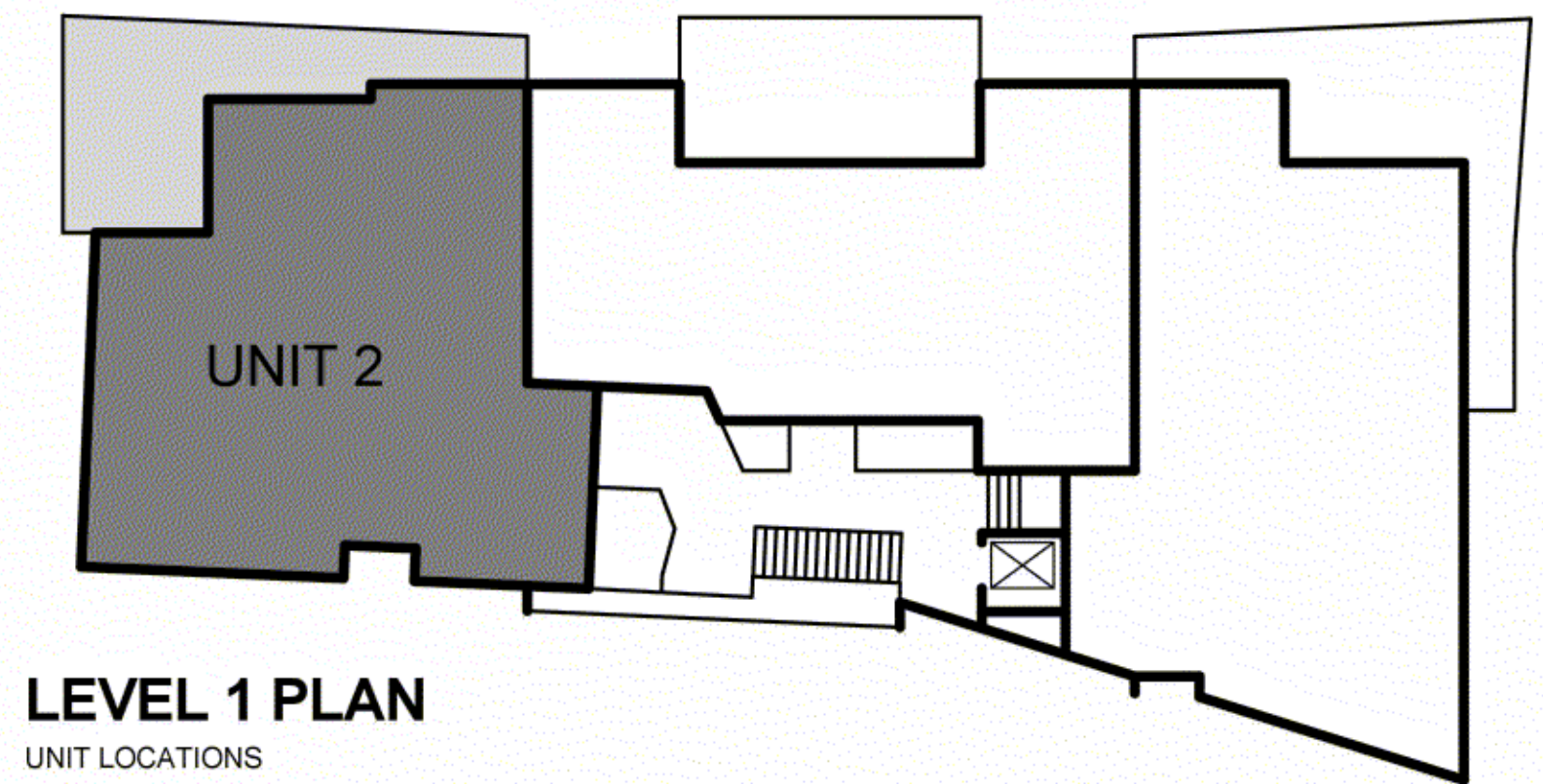
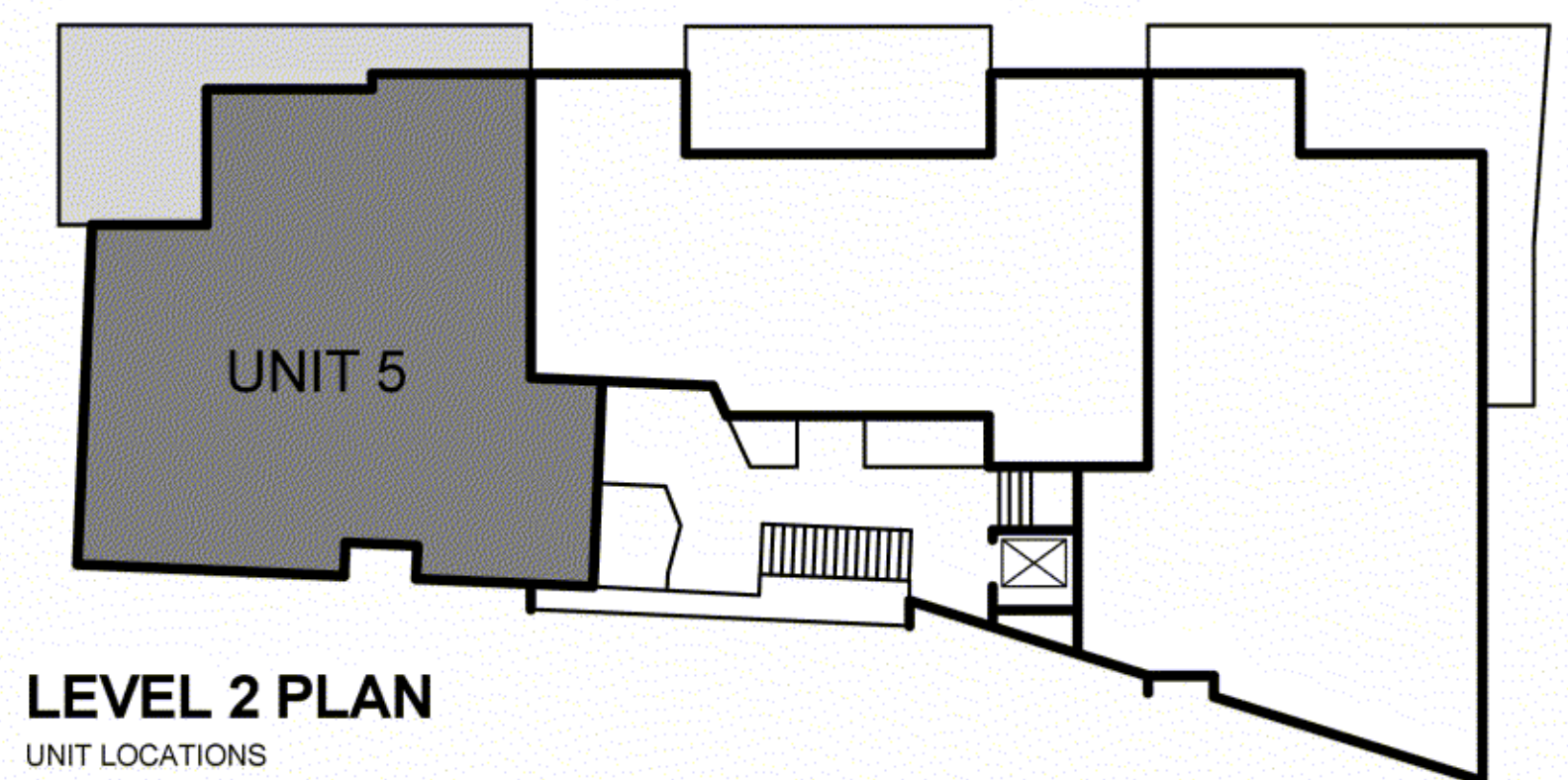


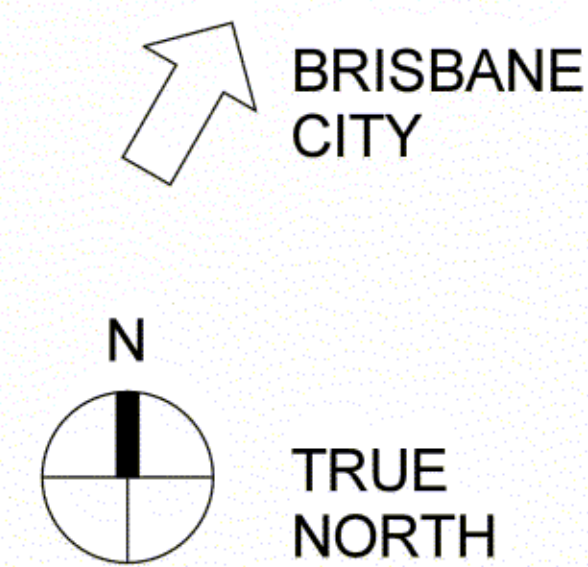
**GROUND FLOOR / CARPARK PLAN**  
CARPARK ALLOCATION



**LEVEL 1 PLAN**  
UNIT LOCATIONS



**LEVEL 2 PLAN**  
UNIT LOCATIONS

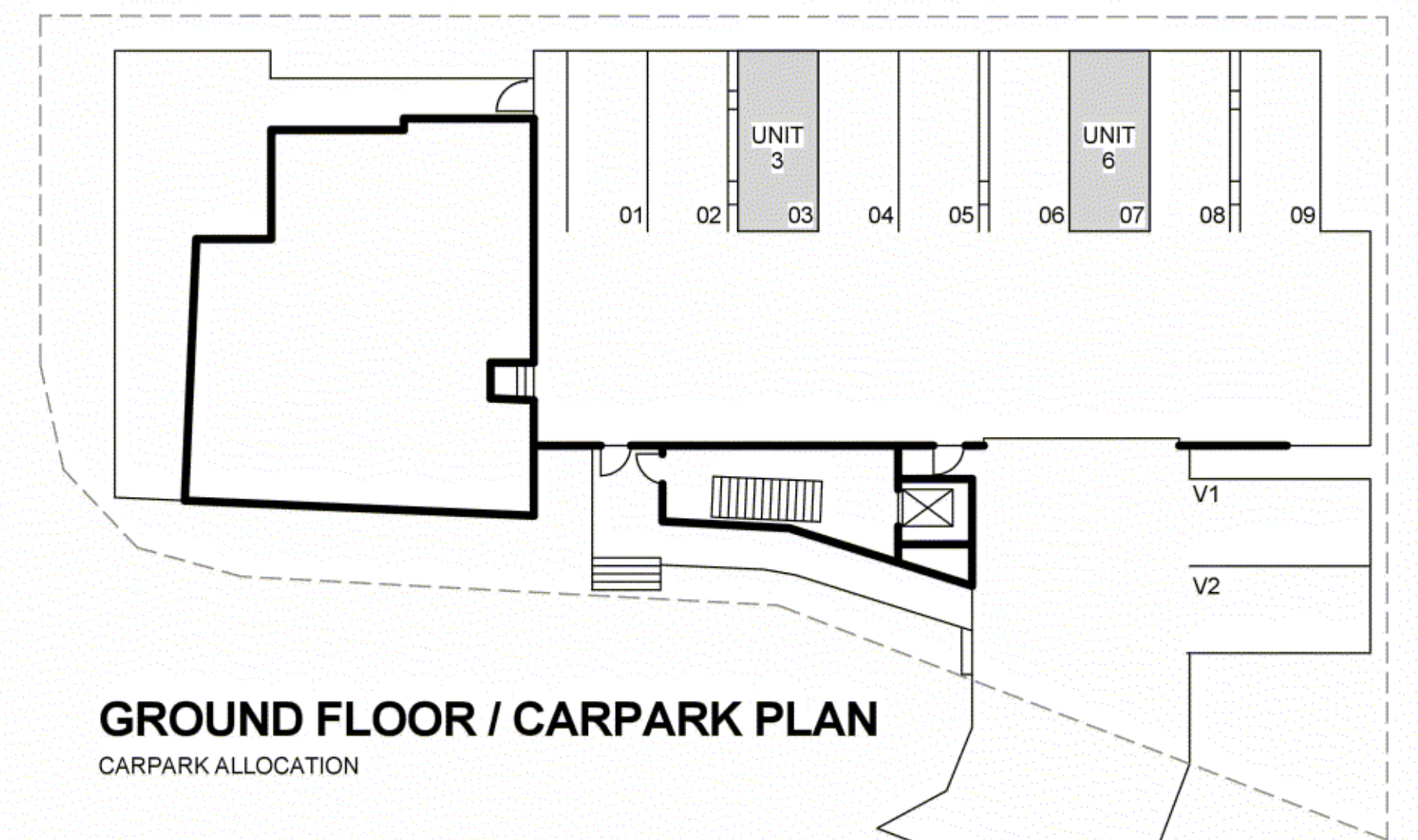
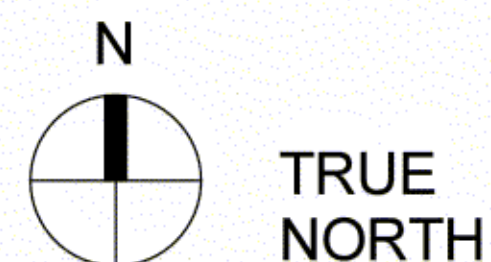


# UNIT 2 + 5

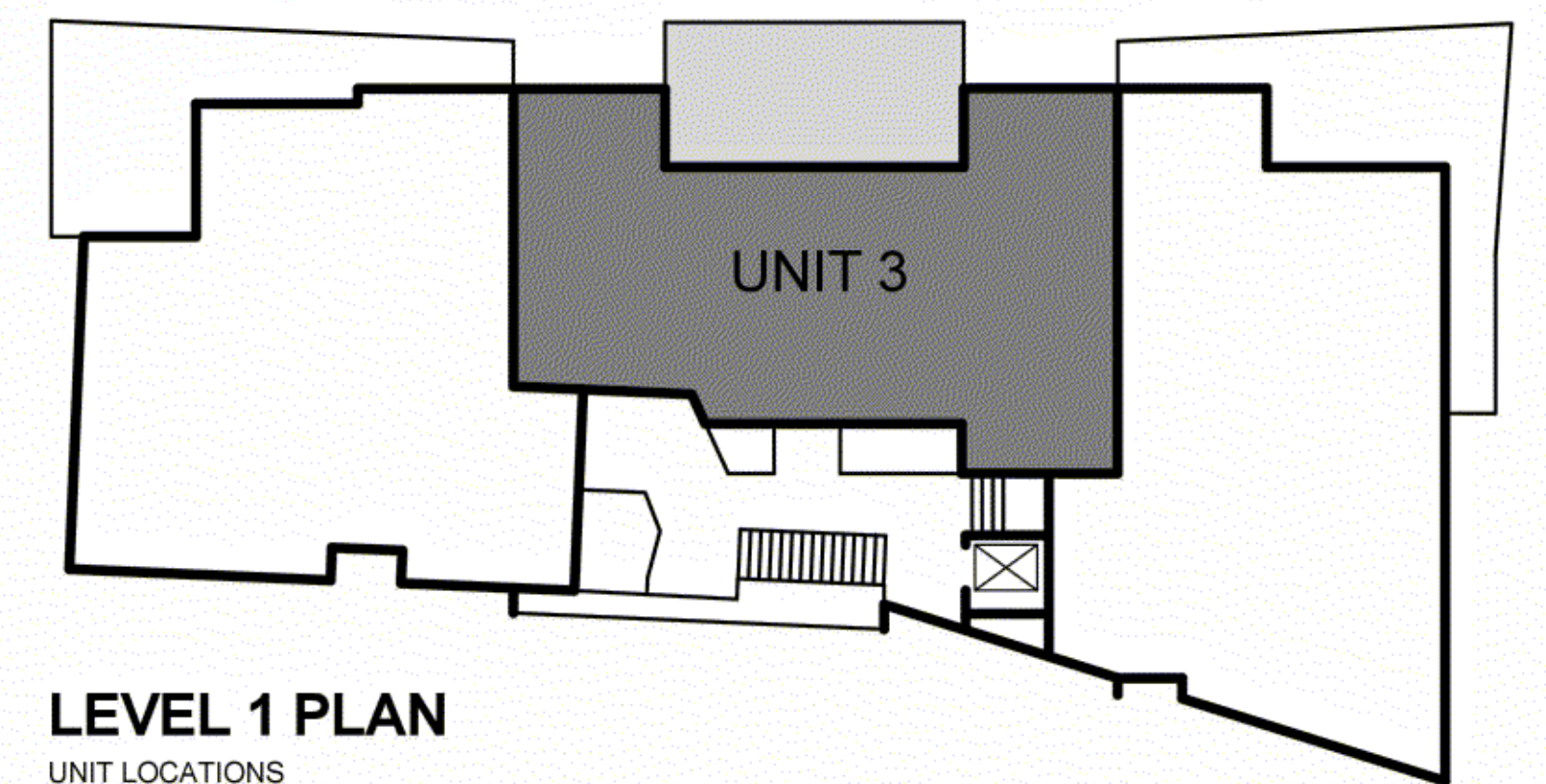
**UNIT 2**  
INTERNAL : 117.1m<sup>2</sup>  
EXTERNAL: 26.9m<sup>2</sup>  
**TOTAL: 144m<sup>2</sup>**

**UNIT 5**  
INTERNAL : 117.1m<sup>2</sup>  
EXTERNAL: 24.5m<sup>2</sup>  
**TOTAL: 141.6m<sup>2</sup>**

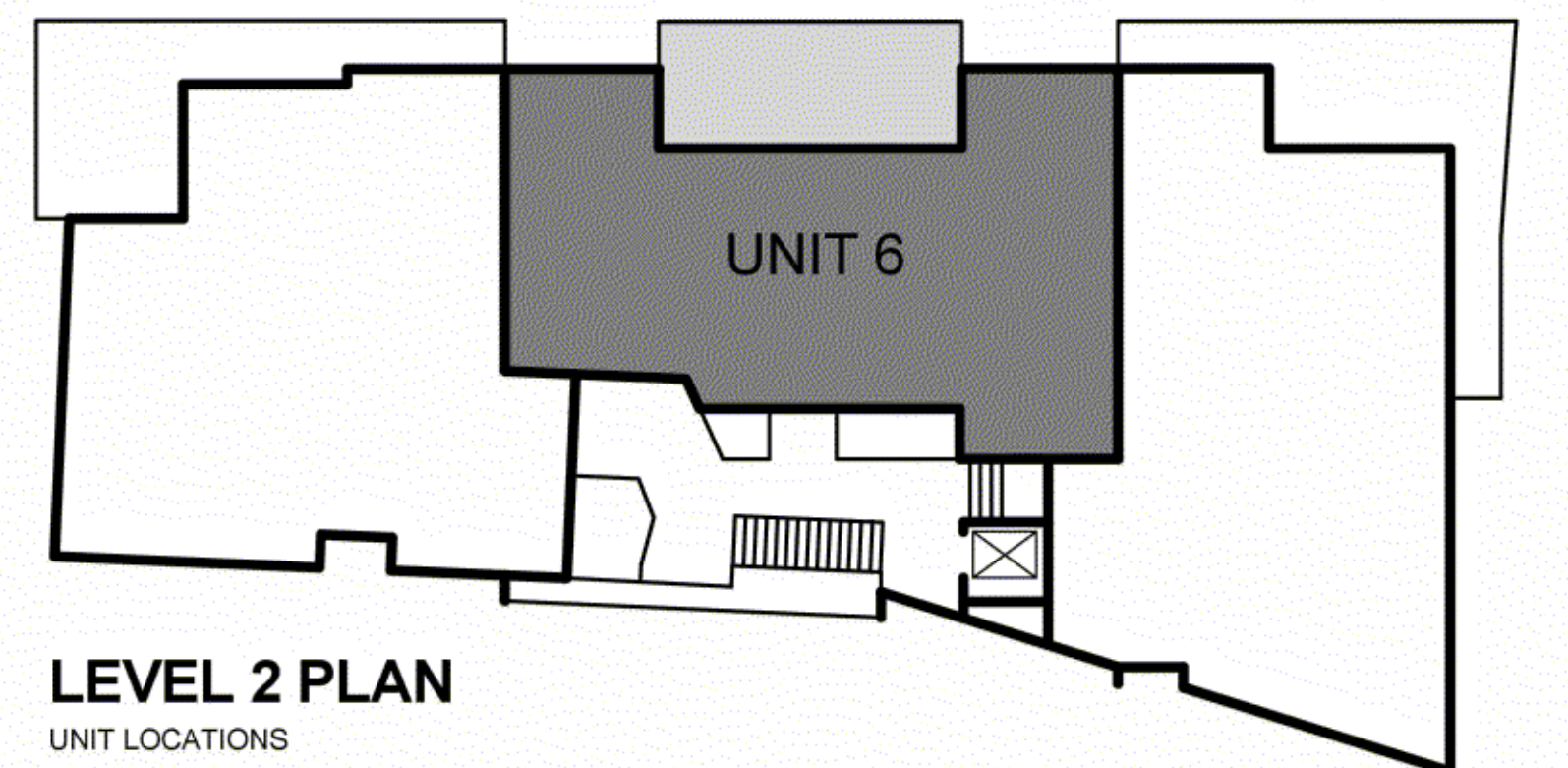




**GROUND FLOOR / CARPARK PLAN**  
CARPARK ALLOCATION



**LEVEL 1 PLAN**  
UNIT LOCATIONS



**LEVEL 2 PLAN**  
UNIT LOCATIONS

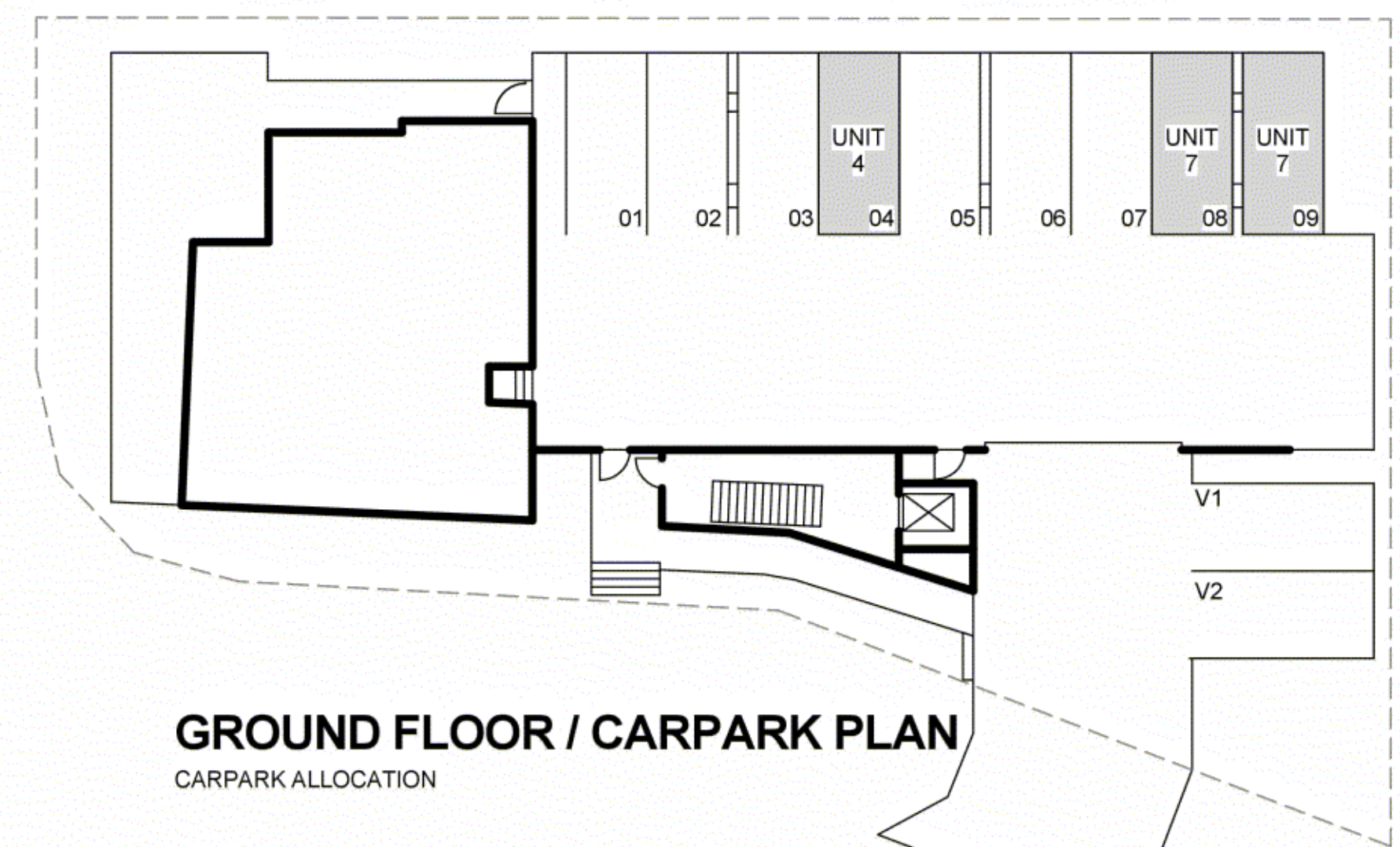
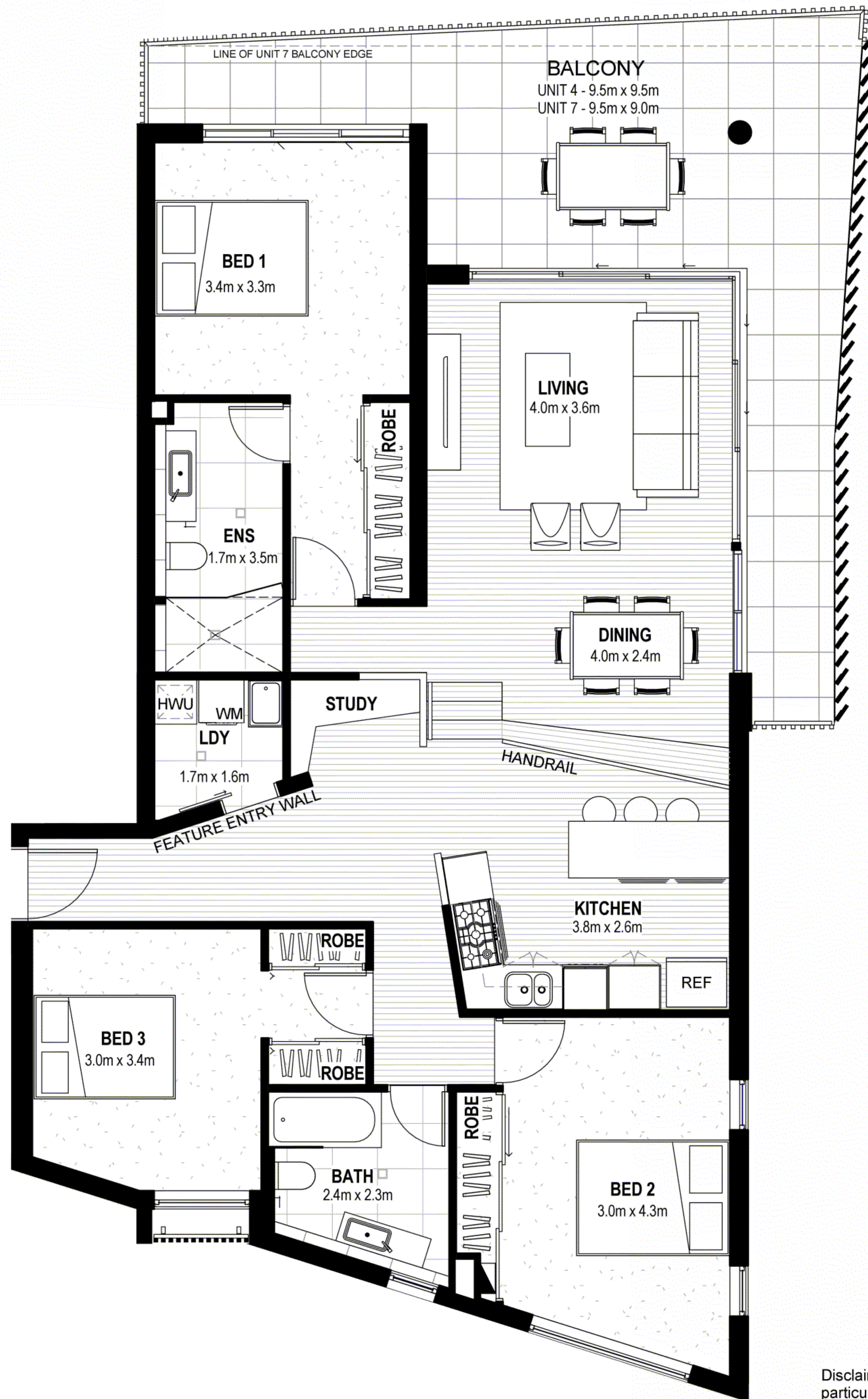
Disclaimer : Whilst every care has been taken in the preparation of this document, the particulars and information contained herein are not to be constructed as containing any representations upon which any interested party is entitled to rely. Illustrations and photographs are for professional presentation purposes and are indicative only. All interested parties should make their own enquiries on all matters referred to in this document. The enclosed material is subject to change without notice. Areas shown are average only. Unit areas will vary from Unit to Unit.

# UNIT 3 + 6

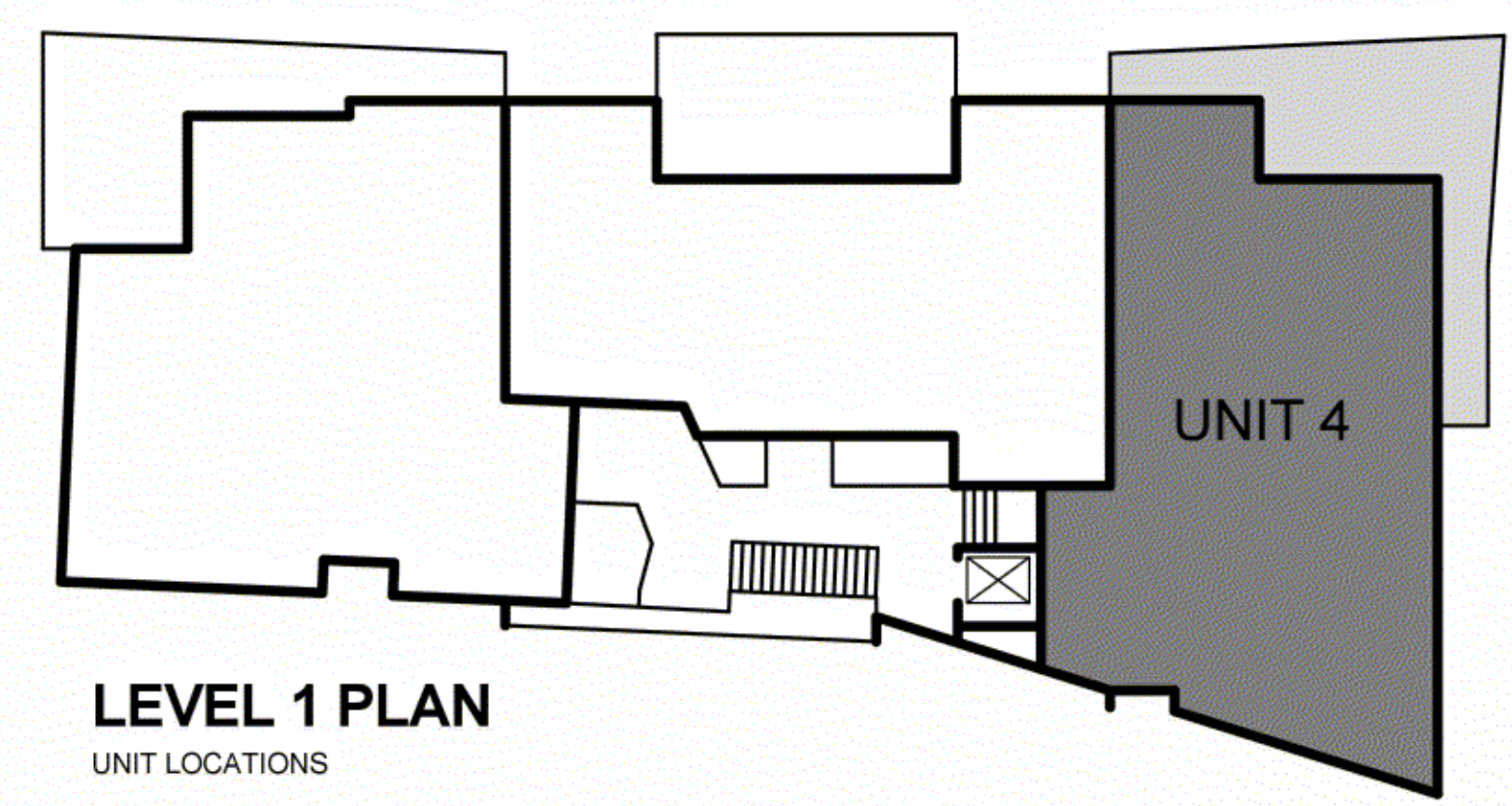
**UNIT 3**  
INTERNAL : 104.3m<sup>2</sup>  
EXTERNAL: 23.0m<sup>2</sup>  
**TOTAL: 127.3m<sup>2</sup>**

**UNIT 6**  
INTERNAL : 104.3m<sup>2</sup>  
EXTERNAL: 20.0m<sup>2</sup>  
**TOTAL: 124.3m<sup>2</sup>**

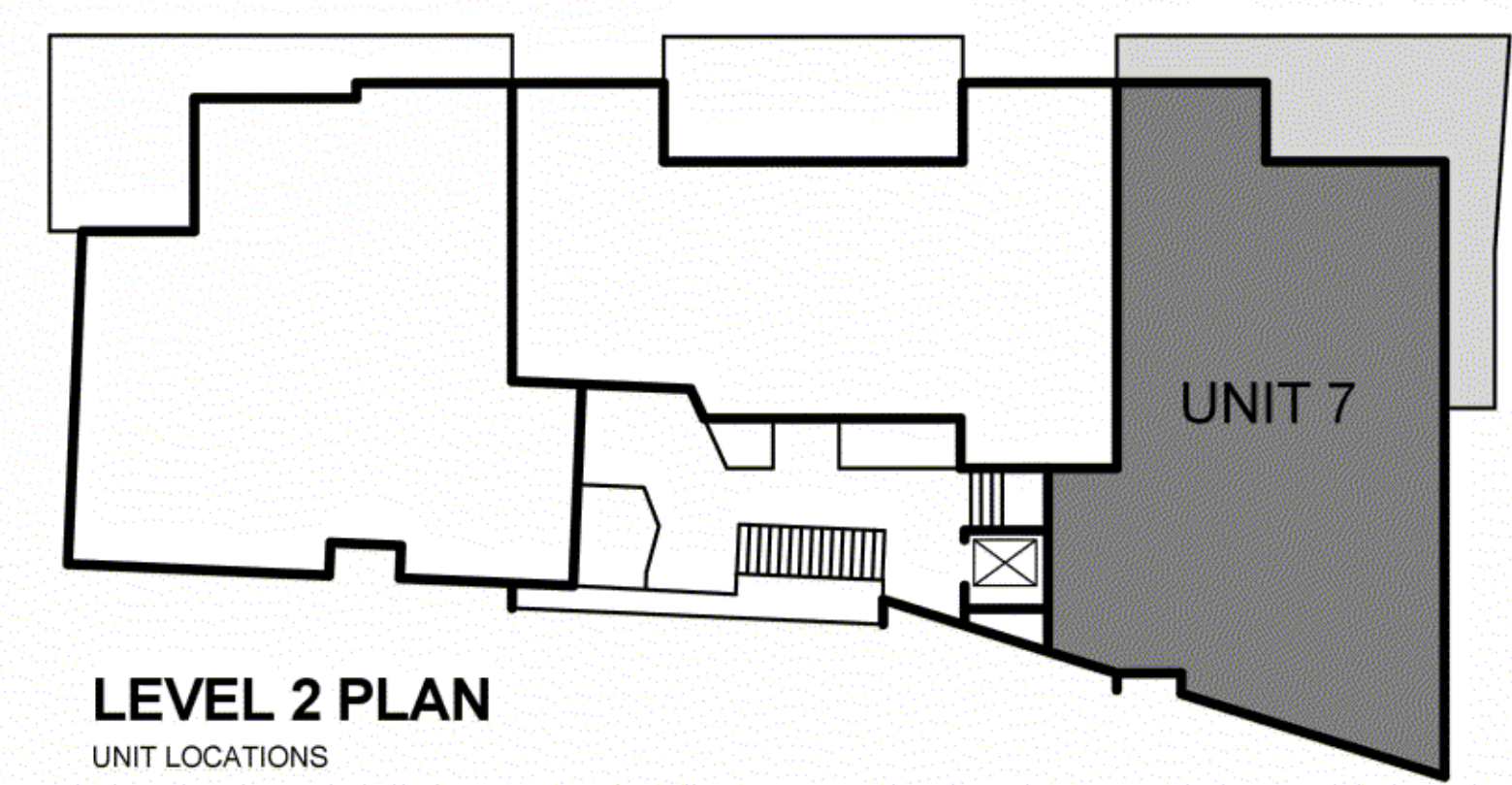




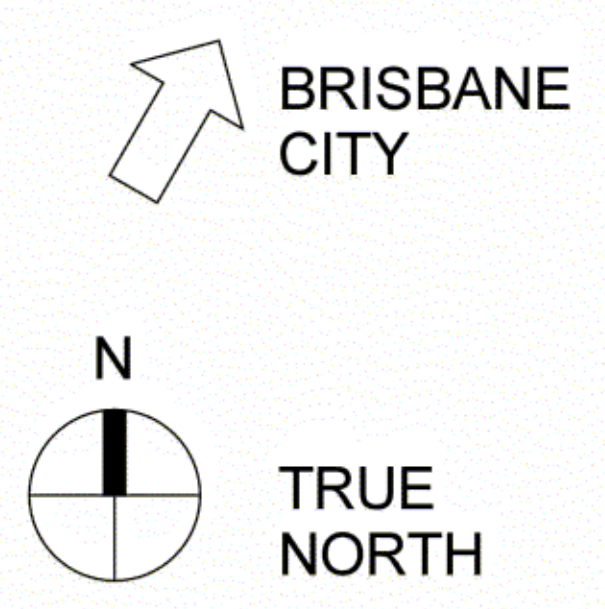
**GROUND FLOOR / CARPARK PLAN**  
CARPARK ALLOCATION



**LEVEL 1 PLAN**  
UNIT LOCATIONS



**LEVEL 2 PLAN**  
UNIT LOCATIONS



# UNIT 4 + 7

Disclaimer : Whilst every care has been taken in the preparation of this document, the particulars and information contained herein are not to be constructed as containing any representations upon which any interested party is entitled to rely. Illustrations and photographs are for professional presentation purposes and are indicative only. All interested parties should make their own enquiries on all matters referred to in this document. The enclosed material is subject to change without notice. Areas shown are average only. Unit areas will vary from Unit to Unit.

<b>UNIT 4</b>	<b>UNIT 7</b>
INTERNAL : 120.9m <sup>2</sup>	INTERNAL : 120.9m <sup>2</sup>
EXTERNAL: 29.5m <sup>2</sup>	EXTERNAL: 27.1m <sup>2</sup>
<b>TOTAL: 150.4m<sup>2</sup></b>	<b>TOTAL: 148m<sup>2</sup></b>